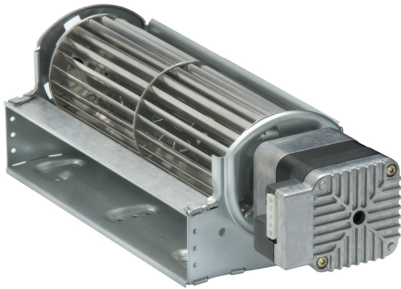


QLZ06/1800-2212

# EC tangential blower

forward-curved



## ebm-papst Landshut GmbH

Hofmark-Aich-Straße 25

D-84030 Landshut

Phone +49 (0) 871 707-0

Fax +49 (0) 871 707-465

info3@de.ebmpapst.com

www.ebmpapst.com

## Nominal data

Type	QLZ06/1800-2212	
Nominal voltage	VDC	24
Speed (rpm)	min <sup>-1</sup>	2050
Power consumption	W	15
Min. ambient temperature	°C	0
Max. ambient temperature	°C	60
Air flow	m <sup>3</sup> /h	180
Pressure increase	Pa	80

ml = Max. load · me = Max. efficiency · fa = Free air · cs = Customer specification · ce = Customer equipment  
Subject to change



**Technical description**

<b>Weight</b>	0.75 kg
<b>Dimensions</b>	60 mm
<b>Degree of protection</b>	IP20
<b>Insulation class</b>	F
<b>Installation position</b>	Horizontal or vertical with motor on bottom

## Product drawing

